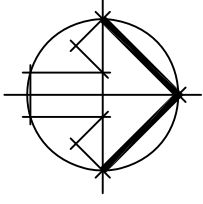


EMERGENCY EVACUATION PROCEDURES

BELGRADE AVENUE COMMUNITY CENTRE

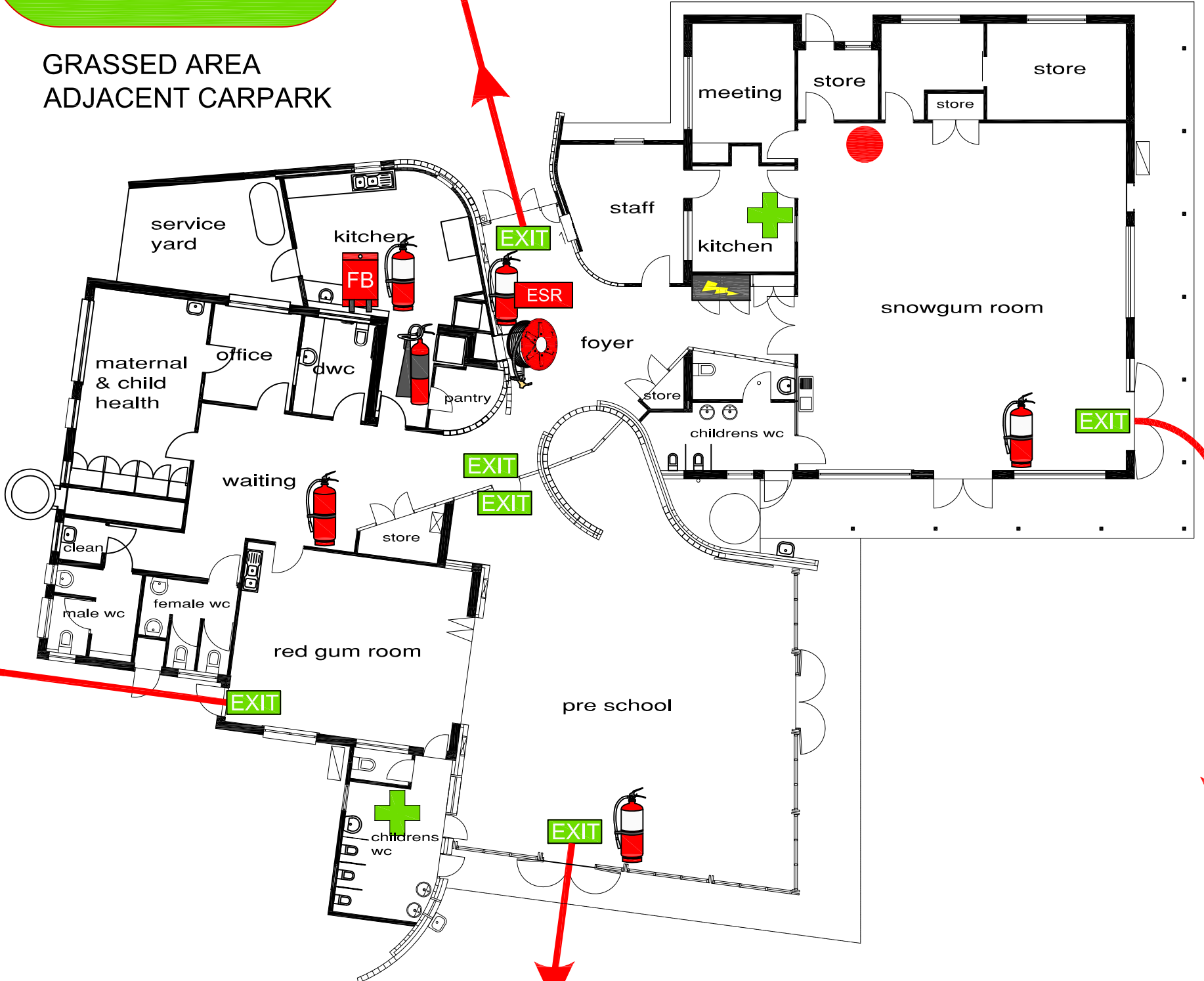


EVACUATION ASSEMBLY POINT 2

belgrade

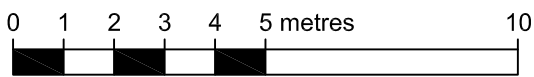
avenue

GRASSED AREA
ADJACENT CARPARK



PARK ON CHAPPLE STREET

EVACUATION ASSEMBLY POINT 1



1. WHEN AN EMERGENCY ARISES, TWO INSTRUCTIONS MAY BE GIVEN, NAMELY -
 a) PREPARE: shut down all vital equipment & the public gather personal equipment.
 b) EVACUATE: all staff & general public are required to leave the building immediately and assemble in the assigned evacuation areas.
2. PLEASE OBEY ALL INSTRUCTIONS GIVEN BY EMERGENCY PERSONELL. YOUR COOPERATION IS ESSENTIAL AT ALL TIMES.
3. UNDER NO CIRCUMSTANCES SHOULD ANY PERSON RE-ENTER THE BUILDING OR SITE UNLESS INSTRUCTED BY EMERGENCY PERSONELL
4. STAFF ARE REQUIRED TO CARRY YARD GATE PADLOCK KEY AT ALL TIMES

	First Aid Kit		Break Glass Alarm
	Fire Extinguisher (Water)		Distribution/ Power Board
	Fire Extinguisher (Powder)		Fire Blanket
	Fire Extinguisher (CO2)		Basin/ sink fixture
	Fire Hose Reel		Essential Services Register
	Fire Indicator Panel		YOU ARE HERE

COOK DESIGN
 BUILDING DESIGNERS
 156 LAWRENCE STREET
 WODONGA VIC 3690
 PH.02 60244055

DRAWN GRAEME COOK (m) 0438 623 462
 CHECKED Andy Herbig - COW
 ISSUE DATE 28.07.11
 COOK REF 1033



**IN CASE OF EMERGENCY
 CALL 000**